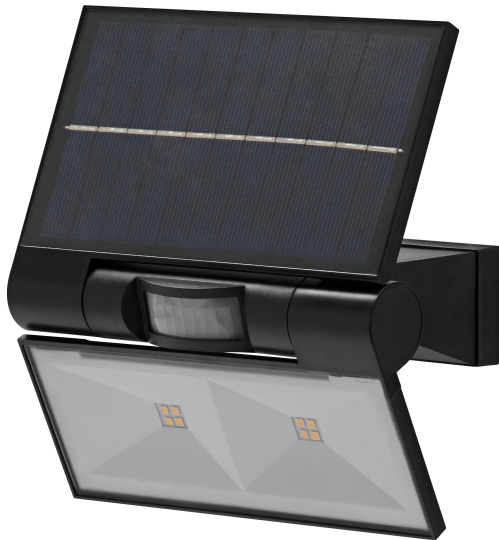


## PRODUCT DATASHEET

# ENDURA Flood Solar Double Sensor

ENDURA STYLE SOLAR DOUBLE | Solar-powered flood luminaire with motion and light sensor



### Areas of application

- Outdoor use (IP44)
- Replacement for floodlights with halogen lamps
- Garages
- Building facades

### Product benefits

- Demand based lighting and energy saving thanks to motion and daylight sensor
- Easy adjustment of daylight and motion detection via push switch
- Energy-efficient thanks to LED technology
- Easy and quick installation
- Energy-saving alternative to luminaires that use halogen lamps

### Product features

- Solar powered outdoor LED luminaire
- PIR motion detector and daylight sensor
- Battery charging via solar panel
- Battery technology: lithium-ion



---

## TECHNICAL DATA

### Electrical data

Nominal wattage	2,9 W
Nominal voltage	3,7 V
Nominal current	925.000 mA
Power factor $\lambda$	$\leq 0.5$
Protection class	III
Operating mode	Battery

### Photometrical data

Luminous flux	380 lm
Luminous efficacy	131 lm/W
Color temperature	3000 K
Light color (designation)	Warm White
Color rendering index Ra	$\geq 80$
Standard deviation of color matching	$\leq 6$ sdc
Photobiological safety group acc. to EN62778	RG0
Photobiological safety group acc. to EN62471	RG0
Beam angle	110 °

### Dimensions & Weight

Length	160.00 mm
Width	110.00 mm
Height	172.00 mm
Product weight	354.00 g

ENDURA FLOOD SOLAR DOUBLE  
SEN DG

### Materials & Colors

Product color	Dark gray
Housing color	Dark gray
Body material	Plastic

Cover material	Polycarbonate (PC)
Mercury content	0.0 mg

### Application & Mounting

Ambient temperature range	0...+40 °C
Temperature range at storage	-20...+40 °C
Type of protection	IP44
Protection class IK (shock resistance)	IK03
Dimmable	Yes
Mounting type	Surface
Application environment	Outdoor
With light source	Yes
Replaceable light source	No

### Lifespan

Lifespan L70/B50 at 25 °C	25000 h <sup>1)</sup>
Number of switching cycles	12500

<sup>1)</sup> t[h]: L70 / B50 @ 25 °C (Ta), t[h]: L80 / B10 @ 25 °C (Ta), t[h]: L90 / B10 @ 25 °C (Ta)

### Sensor

Type of sensor	Motion
Sensor detection angle	100 °

### BATTERY

Type of Battery	Lithium ion
Battery size [GMS]	18650
Number of included batteries	1
Nominal voltage of battery	3.7 V

### Certificates & Standards

Standards	CE / UKCA
Luminaire with limited surface temperature, "D sign"	No





### EQUIPMENT / ACCESSORIES

– Complete mounting and connecting accessories included

## Safety advice

- If the battery compartment (if applicable) does not close securely, stop using the product and keep it away from children. If you think batteries might have been swallowed or placed inside any part of the body, seek immediate medical attention.
- Please avoid: Maximal ambient temperature: +35 °C. Replacement of a battery with an incorrect type that can defeat safeguard (for example, in the case of some lithium battery types). Altitude during operation: 2000 m. Disposal of a battery into fire or a hot oven, or mechanically crushing or cutting of a battery, that can result in an explosion.

## DOWNLOAD DATA

Documents and certificates		Document name
	User instruction / safety instructions	ENDURA FLOOD SOLAR DOUBLE SEN DG
	Legal information	Safety insert G11219579
	Declarations of conformity	ENDURA FLOOD SOLAR DOUBLE SEN DG
	Declarations of conformity UKCA	Special LUM

## LOGISTICAL DATA

Product code	Packaging unit (Pieces/Unit)	Dimensions (length x width x height)	Gross weight	Volume
4099854429453	Folding box 1	189 mm x 189 mm x 644 mm	483.00 g	23.00 dm <sup>3</sup>
4099854429460	Shipping box 8	360 mm x 260 mm x 220 mm	3860.00 g	20.59 dm <sup>3</sup>

The mentioned product code describes the smallest quantity unit which can be ordered. One shipping unit can contain one or more single products. When placing an order, for the quantity please enter single or multiples of a shipping unit.

## DISCLAIMER

Subject to change without notice. Errors and omission excepted. Always make sure to use the most recent release.