



LEDVANCE



HIGHEST FLEXIBILITY  
THROUGH MODULAR SYSTEM

UP TO  
**175**  
lm/W

100 000 h  
LIFETIME

**5Y**  
GUARANTEE

# TRUSYS FLEX TRUNKING SYSTEM

YOUR ALL-ROUNDER FOR MANY LIGHTING PROJECTS



# TRUSYS FLEX

PERFOR-  
MANCE  
CLASS



EFFICIENT, VERSATILE,  
EASY TO INSTALL

**THE MODULAR TRUNKING SYSTEM  
FOR A VARIETY OF APPLICATIONS**

The highly efficient TRUSYS FLEX trunking system comes with numerous components that can be combined as needed, is easy to install and offers many different mounting options. All these features help it meet the specific requirements of many different applications, making it a real problem solver.

---

**+** **FLEXIBLE:** ADAPTS TO DIFFERENT APPLICATION REQUIREMENTS

---

**+** **ADAPTABLE LIGHTING:** DIVERSE BEAM ANGLES AND LUMEN OPTIONS

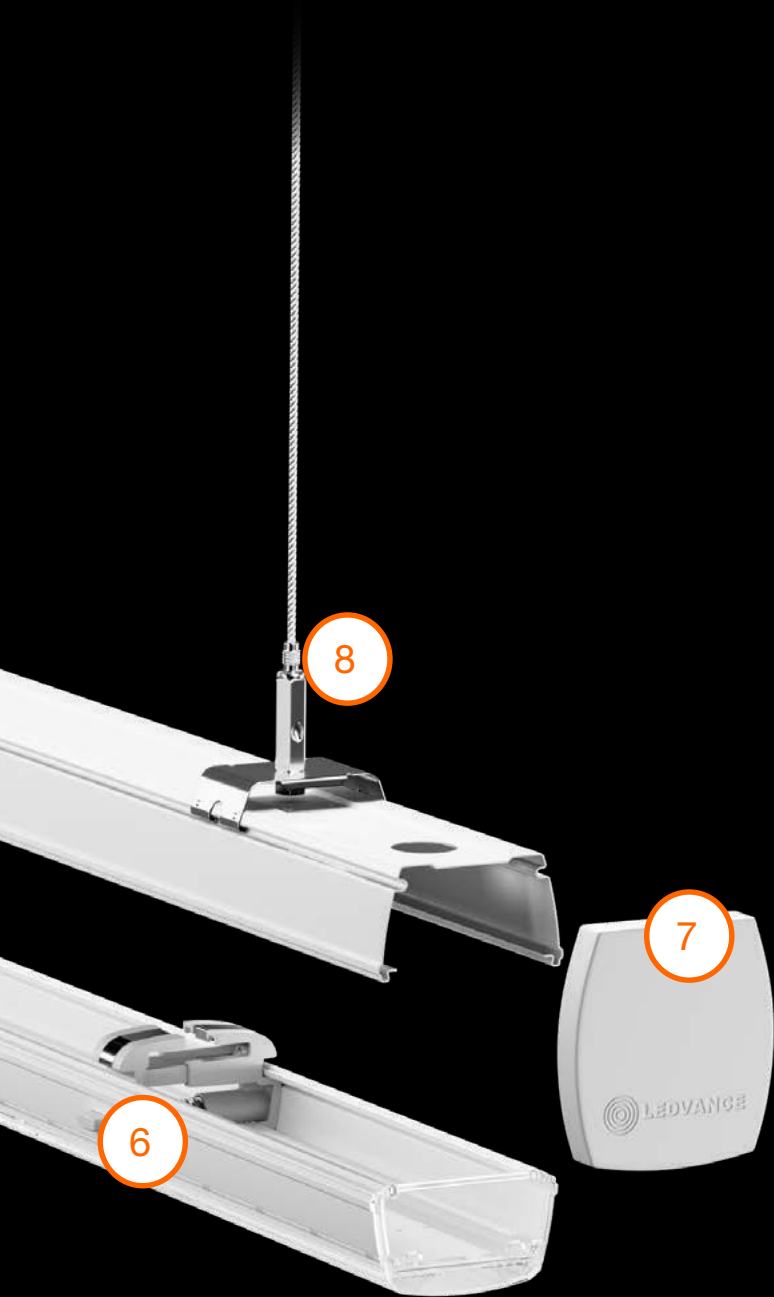
---

**+** **MODULAR SYSTEM:** WIDE RANGE OF COMPONENTS

---

**+** **COMPREHENSIVE SYSTEM:** EASY TO INSTALL

---



### BREAKDOWN OF THE MAIN TRUSYS FLEX COMPONENTS

- 1 Energy Rail 1.5 m, 3 m or 4.5 m
- 2 TRUSYS FLEX LED module in 1.5 m length
- 3 Connector between Energy Rail and LED module
- 4 Control gear
- 5 Optical lens covers
- 6 Smart push button clip for easy mounting of LED module
- 7 End Cap
- 8 Suspension Kit



SEE FOR YOURSELF!

Just scan this QR code and check out:  
[ledvance.com/trusysflex-video](https://ledvance.com/trusysflex-video)



# TRUSYS FLEX AT A GLANCE

## COMPONENTS AND ACCESSORIES FOR CUSTOM CONFIGURATION

Thanks to its many different components, TRUSYS FLEX offers enormous flexibility for a variety of applications. At the same time, the modular system keeps the complexity of planning and ordering a customised installation configuration manageable.

### MOUNTING

#### SUSPENSION KIT

Suspension for mounting energy rail



#### CHAIN KIT

Mounting brackets for chain suspension (chains not included)



#### SURFACE CLIPS



Use for direct surface mounting of energy rails

#### GRID CEILING BRACKETS



Use for surface mounting on grid ceilings



### POWER

#### ENERGY RAIL/ END ENERGY RAIL



Energy rail in 5 and 8 pole

#### FEED-IN/OUT BOX



Feed-in and feed-out connector box in 5 and 8 pole

#### FEED-IN CONNECTOR



Feed-in connector for mounting rail in 5 and 8 pole

#### END CAPS FOR ENERGY RAIL



End caps for mounting on energy rail





## INSERTS

### TRUSYS FLEX LUMINAIRE



- On/Off, DALI and EM
- Beam angle: very wide (VW): 120°, wide (W): 90°, narrow (N): 60°, very narrow (VN): 30°, double symmetric (DS): 2 x 30°, wall washer (WW): 40°
- Light colour: 4,000 K, 6,500 K

### BLIND COVER



Energy rail covers (for sections without luminaires). Separate side covers included.

### INSERT ADAPTERS



**SPOT TRACK**  
900 mm slidable track insert for mounting LEDVANCE TRACKSPOTS; up to 3 spots can be installed on a 1,500 mm rail section.



**T5 TUBE SINGLE/DOUBLE INCL. REFLECTOR ACCESSORY**  
Rail insert for integrating T5 LED tubes (not included) into the trunking system; for one or two LED tubes, including optional side covers and reflector for extra wide beam angle shaping (130°).

Perfect addition:  
Scan here for compatible LEDVANCE T5 LED tubes.



**SENSOR TRACK**  
Rail insert for integrating a PIR sensor (MSensor G3 SFI 30, included) into the trunking system. With preinstalled wiring and optional side covers, available in 600 mm and 1,500 mm lengths.



## CONFIGURATION ACCESSORIES

### T, L & X NODES (OPTION TO CONTACT LDV FOR MORE DETAILED PLANNING)



L-Node



T-Node



X-Node

Steel-sheet connectors, through-wired with 5 or 8 pole wiring and with at least one feeder and one exiter for various multi-directional configuration options



**DO YOU HAVE ANY QUESTIONS ABOUT TRUSYS FLEX? LET US KNOW.**  
We're happy to help you realise your individual TRUSYS FLEX project.  
Get in touch at [contact@ledvance.com](mailto:contact@ledvance.com)

You can find further technical details of all TRUSYS FLEX components online:

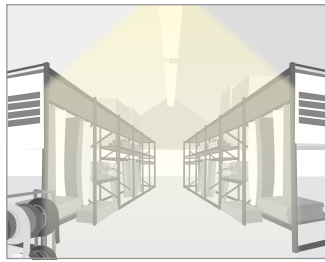
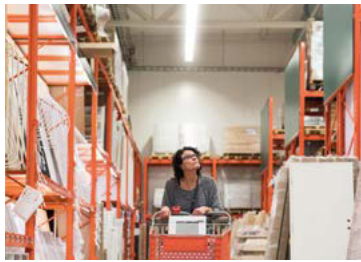


# BEAM ANGLE SELECTION AS INDIVIDUAL AS YOUR DEMANDS



## VERY WIDE (120°)

Very wide beam distribution for industry and warehouses, but open areas such as for loading and packing.



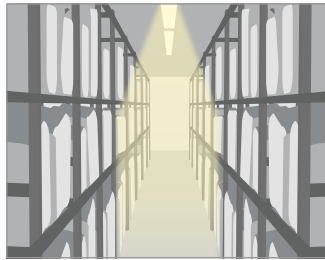
## WIDE (90°)

Wide light distribution is particularly suitable for the homogeneous illumination of high spaces such as large hardware retailers.



## NARROW (60°)

Narrow light distribution is ideal for medium height ceilings with medium heights racks such as storage rooms or warehouses that have shelving positioned closely together with narrow aisles.



## VERY NARROW (30°)

Very narrow light distribution for high heights such as high shelving positioned closely together with narrow aisles.



## DOUBLE SYMMETRIC (2 × 30°)

The double symmetrical light distribution is recommended for uniform double-sided shelf lighting in walkways such as in supermarkets.



## WALL WASHER (40°)

The oblique beam angle can be used to highlight walls and shelves, accentuate advertising images and shine the light in a particular direction such as in supermarket or grocery stores.

# WHATEVER YOU WANT WE CAN DO IT

## LEDVANCE PROJECT SERVICES: CONFIGURATION – PERSONALISATION – TECHNICAL DEVELOPMENT

Does a configuration from the TRUSYS FLEX modular system not meet the requirements for your project 100 %? Help is at hand through our LEDVANCE Project Services – from a slightly modified standard solution to a fully customised product. Together with our European partners, we even develop and deliver special solutions outside our range of services. The following example from the Netherlands shows you how well this works.



## TAILOR-MADE LIGHTING SOLUTIONS

We develop lighting solutions that meet your requirements, whether it's housing colour, connections, installation or something completely different. Contact us: [contact@ledvance.com](mailto:contact@ledvance.com)

## SMART LIGHT FOR HIGH-TECH DATA CENTRE ZIGGO, NETHERLANDS



### THE CHALLENGE

To improve the quality of the light while saving CO<sub>2</sub> emissions and energy costs, the people in charge at the Ziggo data centre decided to take an ambitious step: switch from traditional lighting to LED technology.

### THE SOLUTION

In cooperation with a partner, LEDVANCE implemented a lighting concept using the TRUSYS FLEX system. This involved equipping 600 metres of strip lighting with DALI-2 lighting units, covers and a TRUSYS FLEX mounting plate with sensors specially developed for the project by LEDVANCE Project Services. Controlled by two DALI-2 Pro IoT controllers, the system maximises energy efficiency and enables decentralised escape route lighting connected to LEDVANCE 8P energy rails. These have integrated DALI-2 sensors LS/PD CI for presence detection.



TRUSYS FLEX P  
35W/4000K DALI

TRUSYS  
FLEX RAIL 8P

OSRAM DALI PRO 2  
IOT CONTROL

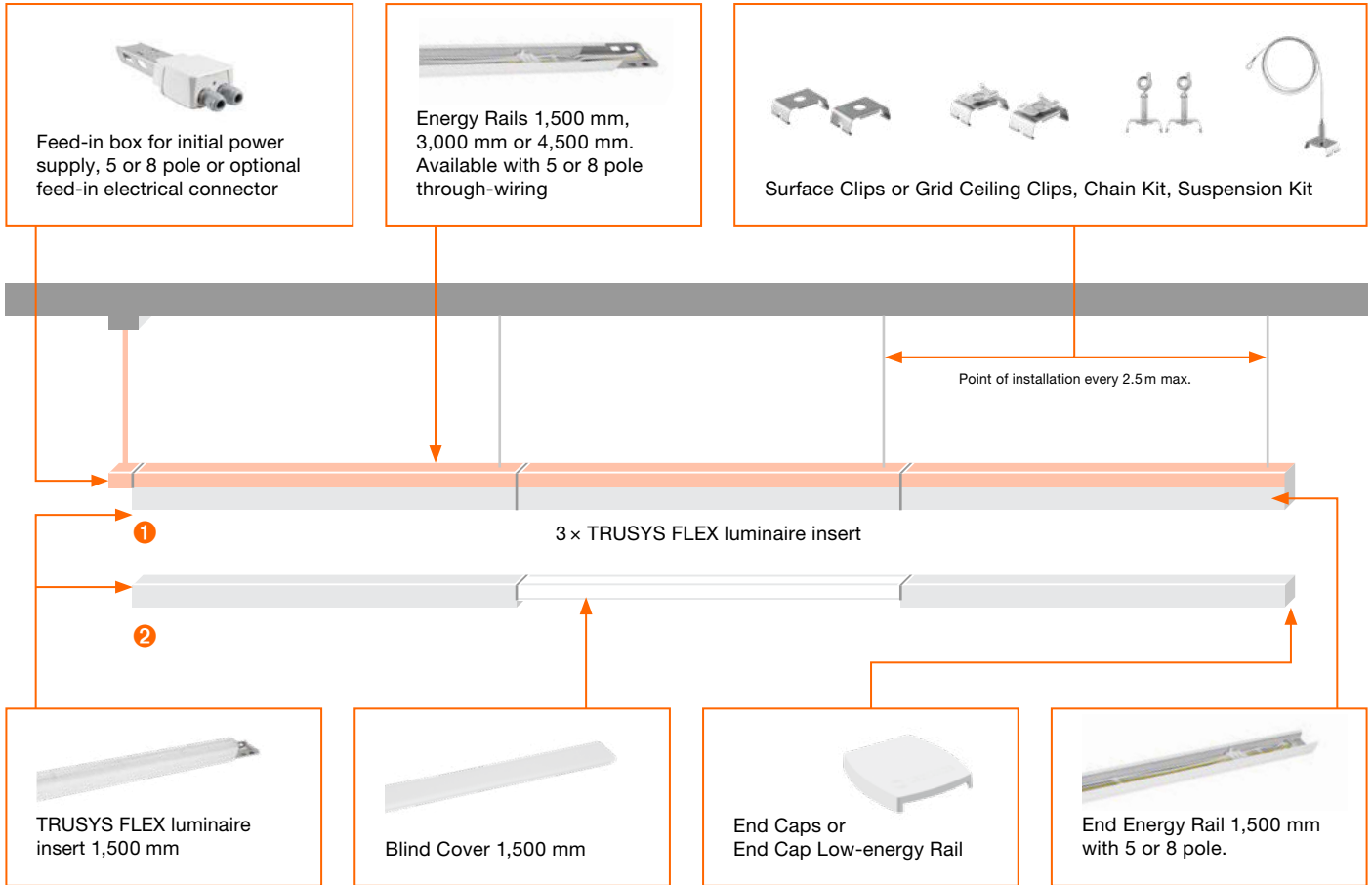
## ZIGGO DATA CENTRE: SMART LIGHTING SUCCESS

LEDVANCE helped deliver expert lighting design & installation with LED TRUSYS FLEX for Ziggo's data centre. See more: [ledvance.com/DataCenter](https://www.ledvance.com/DataCenter)



# THE WAY TO YOUR PERFECT TRUSYS FLEX SOLUTION

## LINEAR INSTALLATION EXAMPLE ① WITHOUT AND ② WITH BLIND COVER



### FOR INSTALLATION YOU WILL NEED:

- 1 × TRUSYS FLEX Feed-in Box/Feed-in electrical connector (5 or 8 pole)
- X × TRUSYS FLEX Energy Rail 5 or 8 pole
- 1 × TRUSYS FLEX End Energy Rail
- X × TRUSYS FLEX LED luminaire insert (TRUSYS FLEX Blind Cover as required)
- X × TRUSYS FLEX Spot Track 1500 insert (optional)
- X × Accessories depending on type of mounting (surface or suspended)
- 1 × Set TRUSYS FLEX End Cap Energy Rail or End Cap Low-energy Rail



### ALTERNATIVES TO TRUSYS FLEX LUMINAIRE FOR INTEGRATION OF TRACK SPOTS, LED TUBES OR SENSORS

SPOT TRACK 1500 insert with an integrated 900 mm slidable track



Enables up to 3 track spots to be installed. Compatible with LEDVANCE Tracklight Spot Zoom and Spot



The combination of T5 rails – for single (ST) or double (DT) tubes – and T5 TRACK REFLECTOR VW allows the use of compatible LEDVANCE T5 LED TUBES (see operating instructions for list).

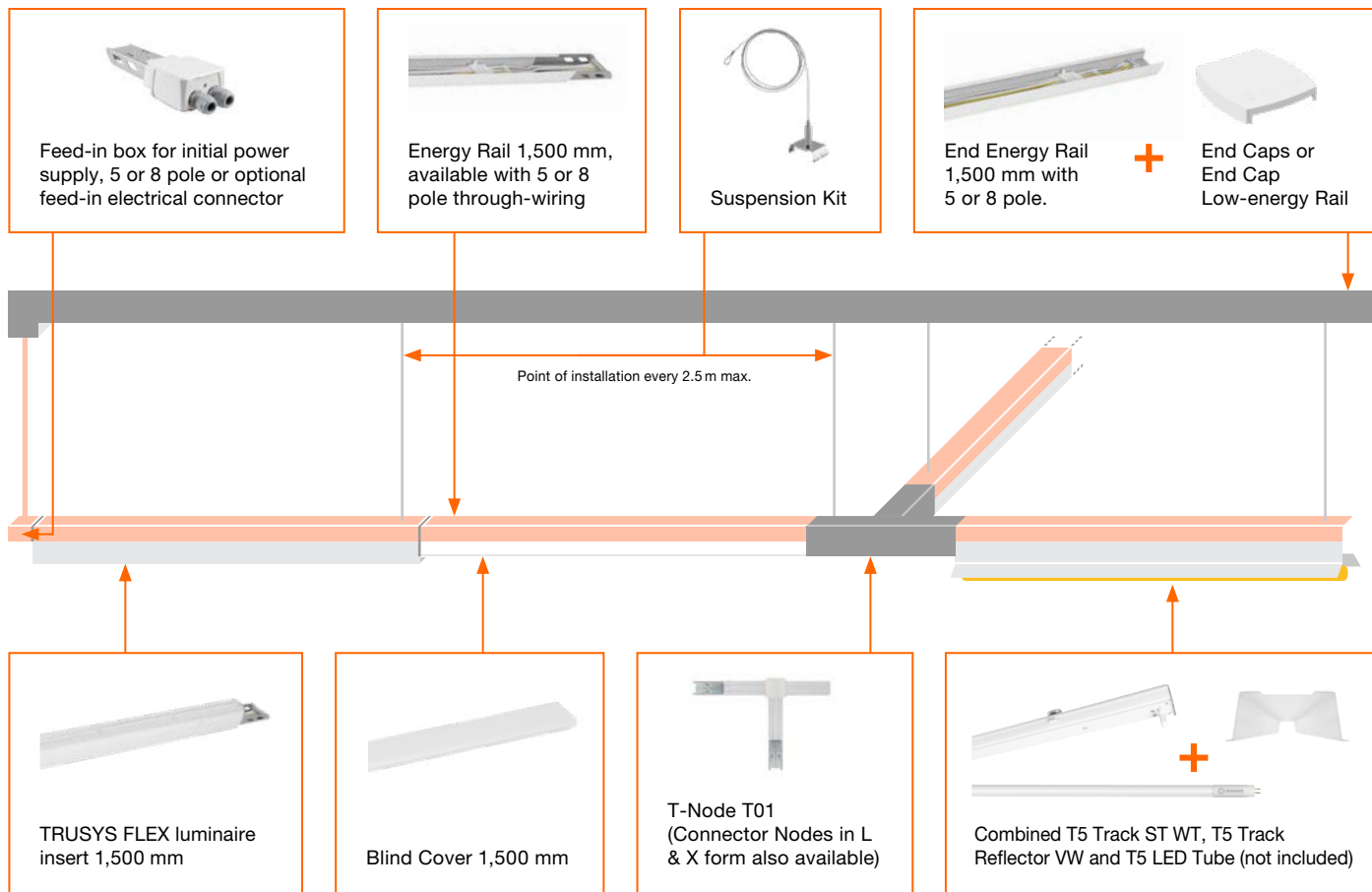


SENSOR TRACK 600/1500 8P (MSensor G3 SFI 30 PIR included)



**Example installations:** So you can install a tailor-made TRUSYS FLEX lighting system for your customers we have put together a summary of the components you'll need for individual luminaires or strip lighting. With appropriate accessories depending on the type of mounting (surface or suspended). For simple strip lighting the mechanical and electrical connectors are already integrated in the trunking.

### T-SHAPED INSTALLATION EXAMPLE (E. G. WITH T-NODE)



#### FOR INSTALLATION YOU WILL NEED:

- 1 x TRUSYS FLEX Feed-in Box/Feed-in electrical connector (5 or 8 pole)
- 3 x TRUSYS FLEX Energy Rail 5 or 8 pole
- 1 x TRUSYS FLEX End Energy Rail 1500 (5 or 8 pole)
- 1 x TRUSYS FLEX End Cap
- 2 x TRUSYS FLEX LED luminaire 1500 insert
- 1 x TRUSYS FLEX Blind Cover 1500
- 1 x TRUSYS FLEX T-Node T01
- 1 x TRUSYS FLEX T5 Track ST 1500 8P WT
- 1 x TRUSYS FLEX T5 Track Reflector VW
- 1 x T5 LED Tube
- 3 x TRUSYS FLEX Suspension Kits



For more information on installation, components and compatible LED TUBES T5 from LEDVANCE see the operating instructions for the relevant TRUSYS FLEX model or accessories.

# TRUSYS FLEX REQUIREMENTS TABLE


Requirements table for sample strip lighting when allocating luminaire inserts to every second insert adapter (50 %) or every third insert adapter (33 %) on the mounting rails (Energy Rail). Additional configurations are of course also possible, for example with no insert adapters (100 %). For precise light planning for your project, please contact your sales representative.



50%								
Length of strip lighting	TRUSYS FLEX luminaire insert	Blind cover	3 m rail	1.5 m rail	End rail	Min. installation points <sup>1</sup>	Feed-in	End caps
4.5 m	2	1	1	0	1	2	1	2
7.5 m	3	2	2	0	1	3	1	2
10.5 m	4	3	3	0	1	4	1	2
13.5 m	5	4	4	0	1	5	1	2
16.5 m	6	5	5	0	1	6	1	2
19.5 m	7	6	6	0	1	7	1	2
22.5 m	8	7	7	0	1	8	1	2
25.5 m	9	8	8	0	1	9	1	2
28.5 m	10	9	9	0	1	10	1	2
31.5 m	11	10	10	0	1	11	1	2
34.5 m	12	11	11	0	1	12	1	2
37.5 m	13	12	12	0	1	13	1	2
40.5 m	14	13	13	0	1	14	1	2
43.5 m	15	14	14	0	1	15	1	2
46.5 m	16	15	15	0	1	16	1	2
49.5 m	17	16	16	0	1	17	1	2

33%								
Length of strip lighting	TRUSYS FLEX luminaire insert	Blind cover	3 m rail	1.5 m rail	End rail	Min. installation points <sup>1</sup>	Feed-in	End caps
6.0 m	2	2	1	1	1	3	1	2
10.5 m	3	4	3	0	1	4	1	2
15.0 m	4	6	4	1	1	6	1	2
19.5 m	5	8	5	0	1	7	1	2
24.0 m	6	10	7	1	1	9	1	2
28.5 m	7	12	9	0	1	10	1	2
33.0 m	8	14	10	1	1	12	1	2
37.5 m	9	16	12	0	1	13	1	2
42.0 m	10	18	13	1	1	15	1	2
46.5 m	11	20	15	0	1	16	1	2
51.0 m	12	22	16	1	1	18	1	2

 Luminaire insert 1,500 mm

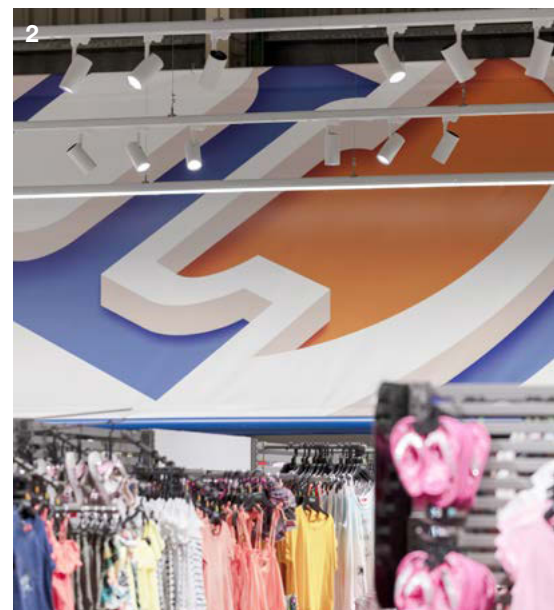
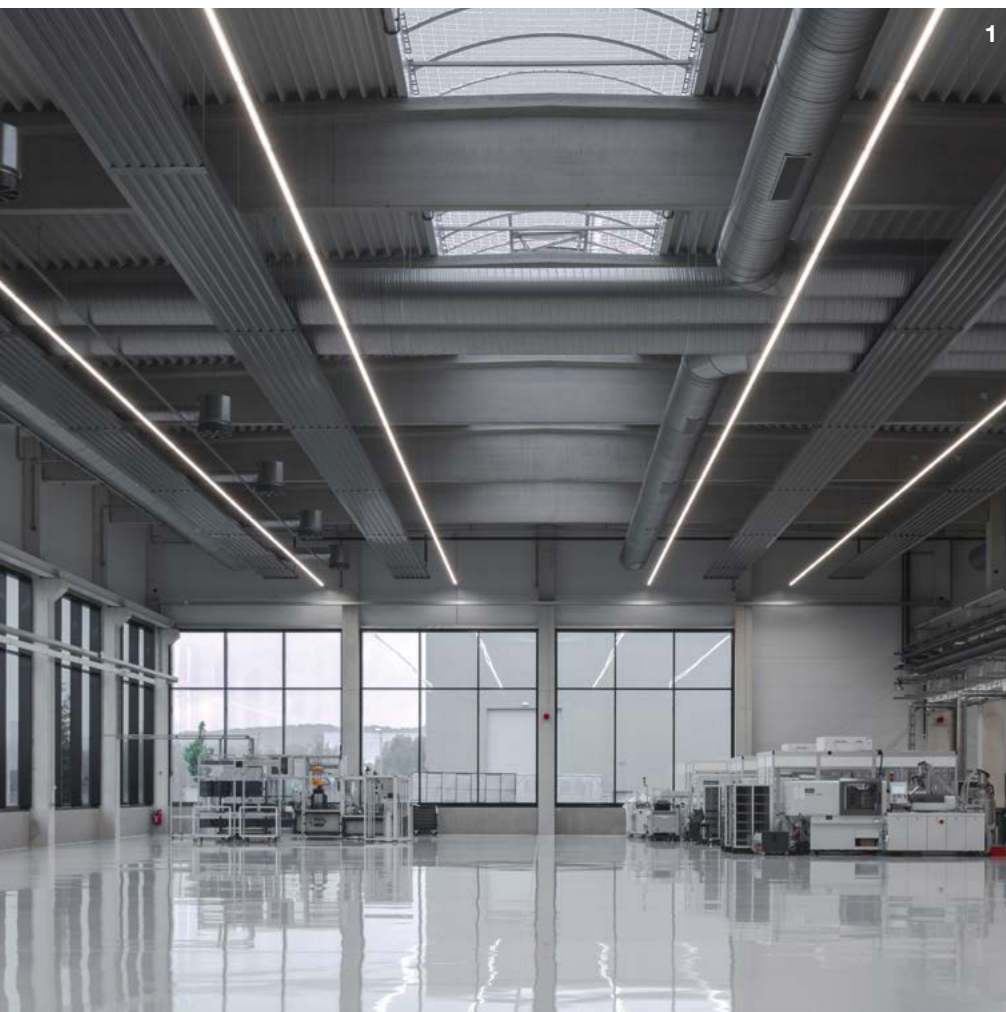
 Blind cover 1,500 mm

All figures mentioned are based on a single installation; deviations from the content possible as per EAN. For precise light planning for your project, please contact your sales representative.  
<sup>1</sup> Calculation based on a distance of 0.75 m from the start and end of the rail to the first and last installation point. Additional installation points every 3 m max.



# CHALLENGES? ACCEPTED!

From industrial applications and warehouses to workshops and shop lighting – the extremely efficient and versatile TRUSYS FLEX trunking system is suitable for almost any application thanks to its numerous mounting and configuration options.



1. The combination of TRUSYS FLEX T5 rails, T5 rail reflectors and powerful LEDVANCE T5 LED TUBES is an excellent solution for industrial applications.
2. LEDVANCE TRACKSPOTS integrated into the TRUSYS FLEX trunking system provide efficient and sales-boosting lighting in retail.

3. Thanks to good colour rendering values of > 80 CRI and protection class IP40, TRUSYS FLEX is also ideal for the food trade.

# TRUSYS FLEX

PERFORMANCE CLASS



Product name	EAN (GTIN)	Replacement for	W	lm	lm/W	K	L70 <sup>1</sup>							L x W x H [mm] Ø x H [mm]
<b>TRUSYS FLEX VERY WIDE – Luminaire inserts with very wide light distribution, up to 175 lm/W</b>														
TRUSYS FLEX P 35W 840 VW CL WT	4058075771017	2 x 49W FL	35	6000	175	4000	100000	120	—	—	1500 x 77.7 x 39.4	—	—	—
TRUSYS FLEX P 35W 865 VW CL WT	4099854190490	2 x 49W FL	35	6000	175	6500	100000	120	—	—	1500 x 77.7 x 39.4	—	—	—
TRUSYS FLEX P 50W 840 VW CL WT	4058075771444	2 x 80W FL	50	8600	175	4000	100000	120	—	—	1500 x 77.7 x 39.4	—	—	—
TRUSYS FLEX P 50W 865 VW CL WT	4099854190650	2 x 80W FL	50	8600	175	6500	100000	120	—	—	1500 x 77.7 x 39.4	—	—	—
TRUSYS FLEX P 70W 840 VW CL WT	4058075771840	3 x 80W FL	70	12100	175	4000	100000	120	—	—	1500 x 77.7 x 39.4	—	—	—
TRUSYS FLEX P 70W 865 VW CL WT	4099854190810	3 x 80W FL	70	12100	175	6500	100000	120	—	—	1500 x 77.7 x 39.4	—	—	—
TRUSYS FLEX P 35W 840 VW CL WT DALI	4058075770799	2 x 49W FL	35	5700	175	4000	100000	120	DALI-2	—	1500 x 77.7 x 39.4	—	—	—
TRUSYS FLEX P 35W 865 VW CL WT DALI	4099854191039	2 x 49W FL	35	5700	165	6500	100000	120	DALI-2	—	1500 x 77.7 x 39.4	—	—	—
TRUSYS FLEX P 50W 840 VW CL WT DALI	4058075770911	2 x 80W FL	50	8600	175	4000	100000	120	DALI-2	—	1500 x 77.7 x 39.4	—	—	—
TRUSYS FLEX P 50W 865 VW CL WT DALI	4099854191190	2 x 80W FL	50	8600	175	6500	100000	120	DALI-2	—	1500 x 77.7 x 39.4	—	—	—
TRUSYS FLEX P 70W 840 VW CL WT DALI	4058075771055	3 x 80W FL	70	12100	175	4000	100000	120	DALI-2	—	1500 x 77.7 x 39.4	—	—	—
TRUSYS FLEX P 70W 865 VW CL WT DALI	4099854191459	3 x 80W FL	70	12100	175	6500	100000	120	DALI-2	—	1500 x 77.7 x 39.4	—	—	—
<b>TRUSYS FLEX WIDE – Luminaire inserts with wide light distribution, up to 175 lm/W</b>														
TRUSYS FLEX P 35W 840 W CL WT	4058075771093	2 x 49W FL	35	6000	175	4000	100000	90	—	—	1500 x 77.7 x 39.4	—	—	—
TRUSYS FLEX P 35W 865 W CL WT	4099854190513	2 x 49W FL	35	6000	175	6500	100000	90	—	—	1500 x 77.7 x 39.4	—	—	—
TRUSYS FLEX P 50W 840 W CL WT	4058075771482	2 x 80W FL	50	8600	175	4000	100000	90	—	—	1500 x 77.7 x 39.4	—	—	—
TRUSYS FLEX P 50W 865 W CL WT	4099854190674	2 x 80W FL	50	8600	175	6500	100000	90	—	—	1500 x 77.7 x 39.4	—	—	—
TRUSYS FLEX P 70W 840 W CL WT	4058075771864	3 x 80W FL	70	12100	175	4000	100000	90	—	—	1500 x 77.7 x 39.4	—	—	—
TRUSYS FLEX P 70W 865 W CL WT	4099854190834	3 x 80W FL	70	12100	175	6500	100000	90	—	—	1500 x 77.7 x 39.4	—	—	—
TRUSYS FLEX P 35W 840 W CL WT DALI	4058075770812	2 x 49W FL	35	5800	175	4000	100000	90	DALI-2	—	1500 x 77.7 x 39.4	—	—	—
TRUSYS FLEX P 35W 865 W CL WT DALI	4099854191053	2 x 49W FL	35	5800	170	6500	100000	90	DALI-2	—	1500 x 77.7 x 39.4	—	—	—
TRUSYS FLEX P 50W 840 W CL WT DALI	4058075770935	2 x 80W FL	50	8600	175	4000	100000	90	DALI-2	—	1500 x 77.7 x 39.4	—	—	—
TRUSYS FLEX P 50W 865 W CL WT DALI	4099854191312	2 x 80W FL	50	8600	175	6500	100000	90	DALI-2	—	1500 x 77.7 x 39.4	—	—	—
TRUSYS FLEX P 70W 840 W CL WT DALI	4058075771079	3 x 80W FL	70	12100	175	4000	100000	90	DALI-2	—	1500 x 77.7 x 39.4	—	—	—
TRUSYS FLEX P 70W 865 W CL WT DALI	4099854191473	3 x 80W FL	70	12100	175	6500	100000	90	DALI-2	—	1500 x 77.7 x 39.4	—	—	—
<b>TRUSYS FLEX WIDE OPAL – Luminaire inserts with wide light distribution and opal lens, up to 167 lm/W</b>														
TRUSYS FLEX P 35W 840 W OP WT	4058075771406	2 x 49W FL	35	5800	167	4000	100000	90	—	—	1500 x 77.7 x 39.4	—	—	—
TRUSYS FLEX P 35W 865 W OP WT	4099854190599	2 x 49W FL	35	5800	167	6500	100000	90	—	—	1500 x 77.7 x 39.4	—	—	—
TRUSYS FLEX P 50W 840 W OP WT	4058075771826	2 x 80W FL	50	8300	167	4000	100000	90	—	—	1500 x 77.7 x 39.4	—	—	—
TRUSYS FLEX P 50W 865 W OP WT	4099854190759	2 x 80W FL	50	8300	167	6500	100000	90	—	—	1500 x 77.7 x 39.4	—	—	—
TRUSYS FLEX P 70W 840 W OP WT	4058075772090	3 x 80W FL	70	11700	167	4000	100000	90	—	—	1500 x 77.7 x 39.4	—	—	—
TRUSYS FLEX P 70W 865 W OP WT	4099854190919	3 x 80W FL	70	11700	167	6500	100000	90	—	—	1500 x 77.7 x 39.4	—	—	—
TRUSYS FLEX P 35W 840 W OP WT DALI	4058075770898	2 x 49W FL	35	5600	167	4000	100000	90	DALI-2	—	1500 x 77.7 x 39.4	—	—	—
TRUSYS FLEX P 35W 865 W OP WT DALI	4099854191138	2 x 49W FL	35	5600	160	6500	100000	90	DALI-2	—	1500 x 77.7 x 39.4	—	—	—
TRUSYS FLEX P 50W 840 W OP WT DALI	4058075771031	2 x 80W FL	50	8300	167	4000	100000	90	DALI-2	—	1500 x 77.7 x 39.4	—	—	—
TRUSYS FLEX P 50W 865 W OP WT DALI	4099854191398	2 x 80W FL	50	8300	167	6500	100000	90	DALI-2	—	1500 x 77.7 x 39.4	—	—	—
TRUSYS FLEX P 70W 840 W OP WT DALI	4058075771901	3 x 80W FL	70	11700	167	4000	100000	90	DALI-2	—	1500 x 77.7 x 39.4	—	—	—
TRUSYS FLEX P 70W 865 W OP WT DALI	4099854191558	3 x 80W FL	70	11700	167	6500	100000	90	DALI-2	—	1500 x 77.7 x 39.4	—	—	—
<b>TRUSYS FLEX NARROW – Luminaire inserts with narrow light distribution, up to 175 lm/W</b>														
TRUSYS FLEX P 35W 840 N CL WT	4058075771307	2 x 49W FL	35	6000	175	4000	100000	60	—	—	1500 x 77.7 x 39.4	—	—	—
TRUSYS FLEX P 35W 865 N CL WT	4099854190537	2 x 49W FL	35	6000	175	6500	100000	60	—	—	1500 x 77.7 x 39.4	—	—	—
TRUSYS FLEX P 50W 840 N CL WT	4058075771574	2 x 80W FL	50	8600	175	4000	100000	60	—	—	1500 x 77.7 x 39.4	—	—	—
TRUSYS FLEX P 50W 865 N CL WT	4099854190698	2 x 80W FL	50	8600	175	6500	100000	60	—	—	1500 x 77.7 x 39.4	—	—	—
TRUSYS FLEX P 70W 840 N CL WT	4058075771888	3 x 80W FL	70	12100	175	4000	100000	60	—	—	1500 x 77.7 x 39.4	—	—	—
TRUSYS FLEX P 70W 865 N CL WT	4099854190858	3 x 80W FL	70	12100	175	6500	100000	60	—	—	1500 x 77.7 x 39.4	—	—	—
TRUSYS FLEX P 35W 840 N CL WT DALI	4058075770836	2 x 49W FL	35	5800	175	4000	100000	60	DALI-2	—	1500 x 77.7 x 39.4	—	—	—
TRUSYS FLEX P 35W 865 N CL WT DALI	4099854191077	2 x 49W FL	35	5800	170	6500	100000	60	DALI-2	—	1500 x 77.7 x 39.4	—	—	—
TRUSYS FLEX P 50W 840 N CL WT DALI	4058075770959	2 x 80W FL	50	8600	175	4000	100000	60	DALI-2	—	1500 x 77.7 x 39.4	—	—	—
TRUSYS FLEX P 50W 865 N CL WT DALI	4099854191336	2 x 80W FL	50	8600	175	6500	100000	60	DALI-2	—	1500 x 77.7 x 39.4	—	—	—
TRUSYS FLEX P 70W 840 N CL WT DALI	4058075771116	3 x 80W FL	70	12100	175	4000	100000	60	DALI-2	—	1500 x 77.7 x 39.4	—	—	—
TRUSYS FLEX P 70W 865 N CL WT DALI	4099854191497	3 x 80W FL	70	12100	175	6500	100000	60	DALI-2	—	1500 x 77.7 x 39.4	—	—	—

<sup>1</sup> t[h]: L70/B50 @ 25°C (T<sub>a</sub>)/t[h]; L80/B10 @ 25°C (T<sub>a</sub>)

<sup>2</sup> Flicker value ≤ 10% for DALI versions

<sup>3</sup> Refer to [www.ledvance.com/guarantee](http://www.ledvance.com/guarantee) for precise conditions



Product name	EAN (GTIN)	Replacement for	W	lm	lm/W	K	L70 <sup>1</sup>	$\Delta$	$\phi$	L x W x H [mm] Ø x H [mm]
--------------	------------	-----------------	---	----	------	---	------------------	----------	--------	------------------------------



**TRUSYS FLEX VERY NARROW – Luminaire inserts with very narrow light distribution, up to 175 lm/W**

TRUSYS FLEX P 35W 840 VN CL WT	4058075771345	2 × 49W FL	35	6000	175	4000	100000	30	—	1500 × 77.7 × 39.4
TRUSYS FLEX P 35W 865 VN CL WT	4099854190551	2 × 49W FL	35	6000	175	6500	100000	30	—	1500 × 77.7 × 39.4
TRUSYS FLEX P 50W 840 VN CL WT	4058075771604	2 × 80W FL	50	8600	175	4000	100000	30	—	1500 × 77.7 × 39.4
TRUSYS FLEX P 50W 865 VN CL WT	4099854190711	2 × 80W FL	50	8600	175	6500	100000	30	—	1500 × 77.7 × 39.4
TRUSYS FLEX P 70W 840 VN CL WT	4058075771925	3 × 80W FL	70	12100	175	4000	100000	30	—	1500 × 77.7 × 39.4
TRUSYS FLEX P 70W 865 VN CL WT	4099854190872	3 × 80W FL	70	12100	175	6500	100000	30	—	1500 × 77.7 × 39.4
TRUSYS FLEX P 35W 840 VN CL WT DALI	4058075770850	2 × 49W FL	35	5800	175	4000	100000	30	DALI-2	1500 × 77.7 × 39.4
TRUSYS FLEX P 35W 865 VN CL WT DALI	4099854191091	2 × 49W FL	35	5800	170	6500	100000	30	DALI-2	1500 × 77.7 × 39.4
TRUSYS FLEX P 50W 840 VN CL WT DALI	4058075770973	2 × 80W FL	50	8600	175	4000	100000	30	DALI-2	1500 × 77.7 × 39.4
TRUSYS FLEX P 50W 865 VN CL WT DALI	4099854191350	2 × 80W FL	50	8600	175	6500	100000	30	DALI-2	1500 × 77.7 × 39.4
TRUSYS FLEX P 70W 840 VN CL WT DALI	4058075771130	3 × 80W FL	70	12100	175	4000	100000	30	DALI-2	1500 × 77.7 × 39.4
TRUSYS FLEX P 70W 865 VN CL WT DALI	4099854191510	3 × 80W FL	70	12100	175	6500	100000	30	DALI-2	1500 × 77.7 × 39.4



**TRUSYS FLEX DOUBLE SYMMETRIC – Luminaire inserts with double symmetric light distribution, up to 175 lm/W**

TRUSYS FLEX P 35W 840 DS CL WT	4058075771383	2 × 49W FL	35	6000	175	4000	100000	2 × 30	—	1500 × 77.7 × 39.4
TRUSYS FLEX P 35W 865 DS CL WT	4099854190575	2 × 49W FL	35	6000	175	6500	100000	2 × 30	—	1500 × 77.7 × 39.4
TRUSYS FLEX P 50W 840 DS CL WT	4058075771802	2 × 80W FL	50	8600	175	4000	100000	2 × 30	—	1500 × 77.7 × 39.4
TRUSYS FLEX P 50W 865 DS CL WT	4099854190735	2 × 80W FL	50	8600	175	6500	100000	2 × 30	—	1500 × 77.7 × 39.4
TRUSYS FLEX P 70W 840 DS CL WT	4058075771994	3 × 80W FL	70	12100	175	4000	100000	2 × 30	—	1500 × 77.7 × 39.4
TRUSYS FLEX P 70W 865 DS CL WT	4099854190896	3 × 80W FL	70	12100	175	6500	100000	2 × 30	—	1500 × 77.7 × 39.4
TRUSYS FLEX P 35W 840 DS CL WT DALI	4058075770874	2 × 49W FL	35	5700	175	4000	100000	2 × 30	DALI-2	1500 × 77.7 × 39.4
TRUSYS FLEX P 35W 865 DS CL WT DALI	4099854191114	2 × 49W FL	35	5700	165	6500	100000	2 × 30	DALI-2	1500 × 77.7 × 39.4
TRUSYS FLEX P 50W 840 DS CL WT DALI	4058075770997	2 × 80W FL	50	8600	175	4000	100000	2 × 30	DALI-2	1500 × 77.7 × 39.4
TRUSYS FLEX P 50W 865 DS CL WT DALI	4099854191374	2 × 80W FL	50	8600	175	6500	100000	2 × 30	DALI-2	1500 × 77.7 × 39.4
TRUSYS FLEX P 70W 840 DS CL WT DALI	4058075771154	3 × 80W FL	70	12100	175	4000	100000	2 × 30	DALI-2	1500 × 77.7 × 39.4
TRUSYS FLEX P 70W 865 DS CL WT DALI	4099854191534	3 × 80W FL	70	12100	175	6500	100000	2 × 30	DALI-2	1500 × 77.7 × 39.4



**TRUSYS FLEX WALLWASHER – Luminaire inserts with asymmetric wallwasher light distribution, up to 175 lm/W**

TRUSYS FLEX P 35W 840 WW CL WT	4099854190636	2 × 49W FL	35	6000	175	4000	100000	40	—	1500 × 77.7 × 39.4
TRUSYS FLEX P 35W 865 WW CL WT	4099854190612	2 × 49W FL	35	6000	175	6500	100000	40	—	1500 × 77.7 × 39.4
TRUSYS FLEX P 50W 840 WW CL WT	4099854190797	2 × 80W FL	50	8600	175	4000	100000	40	—	1500 × 77.7 × 39.4
TRUSYS FLEX P 50W 865 WW CL WT	4099854190773	2 × 80W FL	50	8600	175	6500	100000	40	—	1500 × 77.7 × 39.4
TRUSYS FLEX P 70W 840 WW CL WT	4099854190957	3 × 80W FL	70	12100	175	4000	100000	40	—	1500 × 77.7 × 39.4
TRUSYS FLEX P 70W 865 WW CL WT	4099854190933	3 × 80W FL	70	12100	175	6500	100000	40	—	1500 × 77.7 × 39.4
TRUSYS FLEX P 35W 840 WW CL WT DALI	4099854191176	2 × 49W FL	35	5700	165	4000	100000	40	DALI-2	1500 × 77.7 × 39.4
TRUSYS FLEX P 35W 865 WW CL WT DALI	4099854191152	2 × 49W FL	35	5700	165	6500	100000	40	DALI-2	1500 × 77.7 × 39.4
TRUSYS FLEX P 50W 840 WW CL WT DALI	4099854191435	2 × 80W FL	50	8600	175	4000	100000	40	DALI-2	1500 × 77.7 × 39.4
TRUSYS FLEX P 50W 865 WW CL WT DALI	4099854191411	2 × 80W FL	50	8600	175	6500	100000	40	DALI-2	1500 × 77.7 × 39.4
TRUSYS FLEX P 70W 840 WW CL WT DALI	4099854191596	3 × 80W FL	70	12100	175	4000	100000	40	DALI-2	1500 × 77.7 × 39.4
TRUSYS FLEX P 70W 865 WW CL WT DALI	4099854191572	3 × 80W FL	70	12100	175	6500	100000	40	DALI-2	1500 × 77.7 × 39.4

## TRUSYS FLEX EMERGENCY

Product name	EAN (GTIN)	Replacement for	W	lm	lm/W	K	L70 <sup>1</sup>	$\Delta$	$\phi$	L x W x H [mm] Ø x H [mm]
--------------	------------	-----------------	---	----	------	---	------------------	----------	--------	------------------------------



**TRUSYS FLEX EMERGENCY VERY WIDE – Luminaire inserts with very wide light distribution for standard and emergency lighting, up to 175 lm/W**

TRUSYS FLEX P 35W 840 VW CL WT EM	4058075772878	2 × 49W FL	35	6000	175	4000	100000	120	—	1500 × 77.7 × 39.4
TRUSYS FLEX P 35W 865 VW CL WT EM	4099854191619	2 × 49W FL	35	6000	175	6500	100000	120	—	1500 × 77.7 × 39.4
TRUSYS FLEX P 50W 840 VW CL WT EM	4058075773004	2 × 80W FL	50	8600	175	4000	100000	120	—	1500 × 77.7 × 39.4
TRUSYS FLEX P 50W 865 VW CL WT EM	4099854191770	2 × 80W FL	50	8600	175	6500	100000	120	—	1500 × 77.7 × 39.4
TRUSYS FLEX P 70W 840 VW CL WT EM	4058075773219	3 × 80W FL	70	12100	175	4000	100000	120	—	1500 × 77.7 × 39.4
TRUSYS FLEX P 70W 865 VW CL WT EM	4099854190414	3 × 80W FL	70	12100	175	6500	100000	120	—	1500 × 77.7 × 39.4



**TRUSYS FLEX EMERGENCY WIDE – Luminaire inserts with wide light distribution for standard and emergency lighting, up to 175 lm/W**

TRUSYS FLEX P 35W 840 W CL WT EM	4058075772892	2 × 49W FL	35	6000	175	4000	100000	90	—	1500 × 77.7 × 39.4
TRUSYS FLEX P 35W 865 W CL WT EM	4099854191633	2 × 49W FL	35	6000	175	6500	100000	90	—	1500 × 77.7 × 39.4
TRUSYS FLEX P 50W 840 W CL WT EM	4058075773103	2 × 80W FL	50	8600	175	4000	100000	90	—	1500 × 77.7 × 39.4
TRUSYS FLEX P 50W 865 W CL WT EM	4099854191794	2 × 80W FL	50	8600	175	6500	100000	90	—	1500 × 77.7 × 39.4
TRUSYS FLEX P 70W 840 W CL WT EM	4058075773233	3 × 80W FL	70	12100	175	4000	100000	90	—	1500 × 77.7 × 39.4
TRUSYS FLEX P 70W 865 W CL WT EM	4099854191930	3 × 80W FL	70	12100	175	6500	100000	90	—	1500 × 77.7 × 39.4

<sup>1</sup> t[h]: L70/B50 @ 25 °C (T<sub>a</sub>)/t[h]; L80/B10 @ 25 °C (T<sub>a</sub>)

<sup>2</sup> Flicker value ≤ 10 % for DALI versions

<sup>3</sup> Refer to [www.ledvance.com/guarantee](http://www.ledvance.com/guarantee) for precise conditions

# TRUSYS FLEX EMERGENCY

Product name	EAN (GTIN)	Replacement for	W	lm	lm/W	K	L70 <sup>1</sup>		L x W x H [mm] Ø x H [mm]
<b>TRUSYS FLEX EMERGENCY WIDE OPAL – Luminaire inserts with wide light distribution for standard and emergency lighting, with opal lense, up to 167 lm/W</b>									
TRUSYS FLEX P 35W 840 W OP WT EM	4058075772977	2 x 49W FL	35	5800	167	4000	100000	90	1500 x 77.7 x 39.4
TRUSYS FLEX P 35W 865 W OP WT EM	4099854191718	2 x 49W FL	35	5800	167	6500	100000	90	1500 x 77.7 x 39.4
TRUSYS FLEX P 50W 840 W OP WT EM	4058075773189	2 x 80W FL	50	8300	167	4000	100000	90	1500 x 77.7 x 39.4
TRUSYS FLEX P 50W 865 W OP WT EM	4099854191879	2 x 80W FL	50	8300	167	6500	100000	90	1500 x 77.7 x 39.4
TRUSYS FLEX P 70W 840 W OP WT EM	4058075773318	3 x 80W FL	70	11700	167	4000	100000	90	1500 x 77.7 x 39.4
TRUSYS FLEX P 70W 865 W OP WT EM	4099854192012	3 x 80W FL	70	11700	167	6500	100000	90	1500 x 77.7 x 39.4
<b>TRUSYS FLEX EMERGENCY NARROW – Luminaire inserts with narrow light distribution for standard and emergency lighting, up to 175 lm/W</b>									
TRUSYS FLEX P 35W 840 N CL WT EM	4058075772915	2 x 49W FL	35	6000	175	4000	100000	60	1500 x 77.7 x 39.4
TRUSYS FLEX P 35W 865 N CL WT EM	4099854191657	2 x 49W FL	35	6000	175	6500	100000	60	1500 x 77.7 x 39.4
TRUSYS FLEX P 50W 840 N CL WT EM	4058075773127	2 x 80W FL	50	8600	175	4000	100000	60	1500 x 77.7 x 39.4
TRUSYS FLEX P 50W 865 N CL WT EM	4099854191817	2 x 80W FL	50	8600	175	6500	100000	60	1500 x 77.7 x 39.4
TRUSYS FLEX P 70W 840 N CL WT EM	4058075773257	3 x 80W FL	70	12100	175	4000	100000	60	1500 x 77.7 x 39.4
TRUSYS FLEX P 70W 865 N CL WT EM	4099854191954	3 x 80W FL	70	12100	175	6500	100000	60	1500 x 77.7 x 39.4
<b>TRUSYS FLEX EMERGENCY VERY NARROW – Luminaire inserts with very narrow light distribution for standard and emergency lighting, up to 175 lm/W</b>									
TRUSYS FLEX P 35W 840 VN CL WT EM	4058075772939	2 x 49W FL	35	6000	175	4000	100000	30	1500 x 77.7 x 39.4
TRUSYS FLEX P 35W 865 VN CL WT EM	4099854191671	2 x 49W FL	35	6000	175	6500	100000	30	1500 x 77.7 x 39.4
TRUSYS FLEX P 50W 840 VN CL WT EM	4058075773141	2 x 80W FL	50	8600	175	4000	100000	30	1500 x 77.7 x 39.4
TRUSYS FLEX P 50W 865 VN CL WT EM	4099854191831	2 x 80W FL	50	8600	175	6500	100000	30	1500 x 77.7 x 39.4
TRUSYS FLEX P 70W 840 VN CL WT EM	4058075773271	3 x 80W FL	70	12100	175	4000	100000	30	1500 x 77.7 x 39.4
TRUSYS FLEX P 70W 865 VN CL WT EM	4099854191978	3 x 80W FL	70	12100	175	6500	100000	30	1500 x 77.7 x 39.4
<b>TRUSYS FLEX EMERGENCY DOUBLE ASYMMETRIC – Luminaire inserts with double asymmetric light distribution for standard and emergency lighting, up to 175 lm/W</b>									
TRUSYS FLEX P 35W 840 DS CL WT EM	4058075772953	2 x 49W FL	35	6000	175	4000	100000	2 x 30	1500 x 77.7 x 39.4
TRUSYS FLEX P 35W 865 DS CL WT EM	4099854191695	2 x 49W FL	35	6000	175	6500	100000	2 x 30	1500 x 77.7 x 39.4
TRUSYS FLEX P 50W 840 DS CL WT EM	4058075773165	2 x 80W FL	50	8600	175	4000	100000	2 x 30	1500 x 77.7 x 39.4
TRUSYS FLEX P 50W 865 DS CL WT EM	4099854191855	2 x 80W FL	50	8600	175	6500	100000	2 x 30	1500 x 77.7 x 39.4
TRUSYS FLEX P 70W 840 DS CL WT EM	4058075773295	3 x 80W FL	70	12100	175	4000	100000	2 x 30	1500 x 77.7 x 39.4
TRUSYS FLEX P 70W 865 DS CL WT EM	4099854191992	3 x 80W FL	70	12100	175	6500	100000	2 x 30	1500 x 77.7 x 39.4
<b>TRUSYS FLEX EMERGENCY WALLWASHER – Luminaire inserts with asymmetric wallwasher light distribution for standard and emergency lighting, up to 175 lm/W</b>									
TRUSYS FLEX P 35W 840 WW CL WT EM	4099854191756	2 x 49W FL	35	6000	175	4000	100000	40	1500 x 77.7 x 39.4
TRUSYS FLEX P 35W 865 WW CL WT EM	4099854191732	2 x 49W FL	35	6000	175	6500	100000	40	1500 x 77.7 x 39.4
TRUSYS FLEX P 50W 840 WW CL WT EM	4099854191916	2 x 80W FL	50	8600	175	4000	100000	40	1500 x 77.7 x 39.4
TRUSYS FLEX P 50W 865 WW CL WT EM	4099854191893	2 x 80W FL	50	8600	175	6500	100000	40	1500 x 77.7 x 39.4
TRUSYS FLEX P 70W 840 WW CL WT EM	4099854192050	3 x 80W FL	70	12100	175	4000	100000	40	1500 x 77.7 x 39.4
TRUSYS FLEX P 70W 865 WW CL WT EM	4099854192036	3 x 80W FL	70	12100	175	6500	100000	40	1500 x 77.7 x 39.4

## EMERGENCY LIGHTING PROPERTIES

Product name	Battery life in emergency operation mode	Type of emergency operation test	Type of emergency light operation	Luminous flux in emergency operation mode	Type of Battery
VALID FOR ALL TRUSYS FLEX EMERGENCY TYPES	3 h	Automatic	Maintained/Non-maintained	740 lm	LiFePO4

<sup>1</sup> t[h]: L70/B50 @ 25°C (T<sub>a</sub>)/t[h]: L80/B10 @ 25°C (T<sub>a</sub>)

<sup>2</sup> Refer to [www.ledvance.com/guarantee](http://www.ledvance.com/guarantee) for precise conditions

## TRUSYS FLEX ENERGY RAILS

PERFORMANCE CLASS



Product name	EAN (GTIN)	L × W × H [mm] Ø × H [mm]	MATERIAL	COLOR	No.
--------------	------------	------------------------------	----------	-------	-----

### TRUSYS FLEX ENERGY RAIL 5-POLE – Trunking system 5-pole mounting energy rail

TRUSYS FLEX P RAIL 1500 5P WT	4058075781672	1650 × 70.2 × 38.8	Steel	White	1
TRUSYS FLEX P RAIL 1500 5P END WT	4058075781733	1500 × 70.2 × 38.8	Steel	White	1
TRUSYS FLEX P RAIL 3000 5P WT	4058075781757	3150 × 70.2 × 38.8	Steel	White	1
TRUSYS FLEX P RAIL 4500 5P WT	4058075793156	4650 × 70.2 × 38.8	Steel	White	1



### TRUSYS FLEX ENERGY RAIL 8-POLE – Trunking system 8-pole mounting energy rail

TRUSYS FLEX P RAIL 600 8P WT	4099854193521	750 × 70.2 × 38.8	Steel	White	2
TRUSYS FLEX P RAIL 600 8P END WT	4099854193545	600 × 70.2 × 38.8	Steel	White	2
TRUSYS FLEX P RAIL 1500 8P WT	4058075781696	1650 × 70.2 × 38.8	Steel	White	2
TRUSYS FLEX P RAIL 1500 8P END WT	4058075781719	1500 × 70.2 × 38.8	Steel	White	2
TRUSYS FLEX P RAIL 3000 8P WT	4058075781771	3150 × 70.2 × 38.8	Steel	White	2
TRUSYS FLEX P RAIL 4500 8P WT	4058075793170	4650 × 70.2 × 38.8	Steel	White	2



## TRUSYS FLEX NODES

PERFORMANCE CLASS



Product name	EAN (GTIN)	L × W × H [mm] Ø × H [mm]	MATERIAL	COLOR	No.
--------------	------------	------------------------------	----------	-------	-----

### TRUSYS FLEX NODES – Shaped rail connector for corners

TRUSYS FLEX L01-NODE 5P WT	4058075782075	446 × 296 × 59	Steel	White	—
TRUSYS FLEX L02-NODE 5P WT	4058075782082	446 × 296 × 59	Steel	White	1
TRUSYS FLEX L01-NODE 8P WT	4058075782099	446 × 296 × 59	Steel	White	—
TRUSYS FLEX L02-NODE 8P WT	4058075782105	446 × 296 × 59	Steel	White	1
TRUSYS FLEX T01-NODE 5P WT	4058075782112	650 × 446 × 59	Steel	White	2
TRUSYS FLEX T02-NODE 5P WT	4058075782129	650 × 446 × 59	Steel	White	—
TRUSYS FLEX T03-NODE 5P WT	4058075782136	800 × 296 × 59	Steel	White	—
TRUSYS FLEX T01-NODE 8P WT	4058075782143	650 × 446 × 59	Steel	White	2
TRUSYS FLEX T02-NODE 8P WT	4058075782150	650 × 446 × 59	Steel	White	—
TRUSYS FLEX T03-NODE 8P WT	4058075782167	800 × 296 × 59	Steel	White	—
TRUSYS FLEX X01-NODE 5P WT	4058075782174	800 × 650 × 59	Steel	White	3
TRUSYS FLEX X01-NODE 8P WT	4058075782181	800 × 650 × 59	Steel	White	3



<sup>1</sup> Refer to [www.ledvance.com/guarantee](http://www.ledvance.com/guarantee) for precise conditions

## ABOUT LEDVANCE

With business activities in over 140 countries, LEDVANCE is one of the world's leading general lighting companies. Emerging from OSRAM's general lighting division, LEDVANCE's portfolio includes LED lamps and luminaires, intelligent lighting products, traditional lamps and renewable energy solutions.

#POWERTHROUGHLIGHT

LEDVANCE GmbH  
Parkring 1-5  
85748 Garching  
Germany

# LEDVANCE

## TRUSYS FLEX TRACKS/INSERTS

PERFORMANCE CLASS



Product name	EAN (GTIN)	L x W x H [mm] Ø x H [mm]	MATERIAL	COLOR	No.
<b>TRUSYS FLEX TRACKS/INSERTS – Track rail inserts</b>					
TRUSYS FLEX BLIND COVER WT	4058118270828	1500 x 70 x 21	Polycarbonate (PC)	White	1
TRUSYS FLEX SPOT TRACK 1500 WT	4058075782051	1500 x 70 x 15.2	Aluminum	White	2
TRUSYS FLEX SENSOR TRACK 600 8P WT	4099854193637	598.5 x 69.8 x 56	Aluminium	White	—
TRUSYS FLEX SENSOR TRACK 1500 8P WT	4099854193651	1498.5 x 69.8 x 56	Aluminium	White	3
TRUSYS FLEX T5 TRACK ST WT	4099854230158	1498.5 x 77.7 x 91	Steel	White	4
TRUSYS FLEX T5 TRACK DT WT	4099854230172	1498.5 x 91.3 x 97	Steel	White	5
TRUSYS FLEX T5 TRACK REFLECTOR VW	4099854230196	1486 x 121 x 50	Steel	White	6

## TRUSYS FLEX ACCESSORIES



Product name	EAN (GTIN)	L x W x H [mm] Ø x H [mm]	MATERIAL	COLOR	No.
<b>TRUSYS FLEX Accessories</b>					
TRUSYS FLEX SUSPENSION KIT	4058075781795	58 x 35 x 65	Steel	Silver	1
TRUSYS FLEX CHAIN KIT	4058075781818	90 x 28 x 10	Steel	Silver	2
TRUSYS FLEX END CAP RAIL WT	4058075781856	78 x 72 x 19	Polycarbonate (PC)	White	3
TRUSYS FLEX END CAP LOW RAIL WT	4058075781870	57 x 72 x 19	Polycarbonate (PC)	White	4
TRUSYS FLEX SURFACE CLIP	4058075781894	57 x 35 x 18	Steel	Silver	5
TRUSYS FLEX GRID CEILING CLIP	4058075781917	57 x 35 x 26	Steel	Silver	6
TRUSYS FLEX FEED IN CONNECTOR 5P	4099854230219	98 x 40 x 15	Polyamid (PA)/Polyvinylchlorid (PVC)	White/Orange	7
TRUSYS FLEX FEED IN CONNECTOR 8P	4099854230233	98 x 64 x 15	Polyamid (PA)/Polyvinylchlorid (PVC)	White/Orange	8
TRUSYS FLEX FEED IN 5P	4058075781931	39 x 27 x 14	Polyamid (PA)	White	9
TRUSYS FLEX FEED IN 8P	4058075781955	54 x 27 x 14	Polyamid (PA)	White	10
TRUSYS FLEX FEED IN BOX 5P WT	4058075781979	272 x 92 x 58	Steel/Polycarbonate (PC)	White	11
TRUSYS FLEX FEED IN BOX 8P WT	4058075781993	27 x 92 x 582	Steel/Polycarbonate (PC)	White	11
TRUSYS FLEX FEED OUT BOX 5P WT	4058075782013	296 x 92 x 58	Steel/Polycarbonate (PC)	White	12
TRUSYS FLEX FEED OUT BOX 8P WT	4058075782037	296 x 92 x 58	Steel/Polycarbonate (PC)	White	12

<sup>1</sup> Refer to [www.ledvance.com/guarantee](http://www.ledvance.com/guarantee) for precise conditions