

LEDVANCE.COM



**LEDVANCE**

PROJECT  
SERVICES



# CUSTOMISED LIGHTING

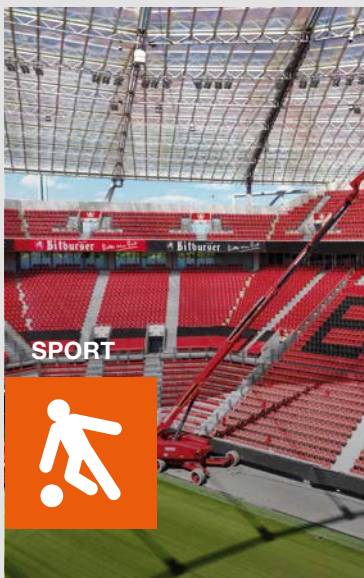
POWERED THROUGH INTELLIGENCE



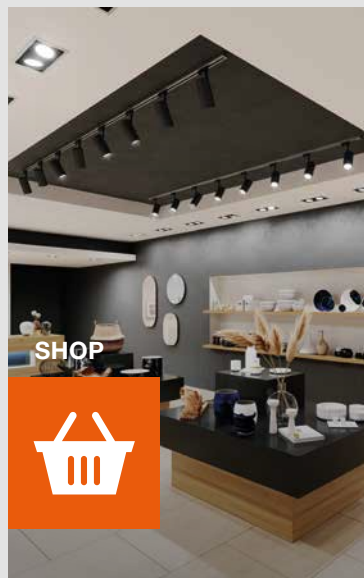
OFFICE



INDUSTRY



SPORT



SHOP



URBAN  
& STREET



# DEDICATION TO NEW IDEAS

Lighting is more than just illumination – it's about creating spaces that inspire and elevate experiences. Even small adjustments can significantly enhance a lighting solution, much like fine-tuning an engine.

Whether it's integrating sensors, changing luminaire housing colours, or customising wiring – LEDVANCE PROJECT SERVICES turns your specific ideas into tailored solutions.



## TAILOR MADE SOLUTIONS

We transform standard lighting fixtures into one-of-a-kind lighting solutions tailored to your project's specific needs.



## EFFICIENCY AND TECHNICAL MASTERY

Skilled engineering and rapid response capabilities enable us to deliver tailored solutions efficiently; across three levels of project complexity.



## COMPREHENSIVE QUALITY ASSURANCE

We ensure excellence through rigorous testing, certified technology, and ongoing 5-year guarantees, supported by a network of European lighting innovation partners.



The LPS team envisions the best possible solution. By listening closely to our customers, we transform their ideas into real, tailored lighting solutions.

**Maxime Rassent**  
Head of LEDVANCE Project Services



# TESTING

Besides LEDVANCE catalogue-standard products, we provide solutions that match the complexity and specific needs of your project.



YOUR TAILOR-MADE LIGHTING SOLUTIONS



IP water chamber testing



Electromagnetic compatibility testing

# SPECIFICATION



**EASY & FAST  
CHANGES**

Choose from our SPECIFY range.



**MID-LEVEL  
CHANGES**

Add your specific setup and project requirements to modify our standard products to fit your needs.



**HIGH COMPLEXITY  
FROM SCRATCHES**

Completely customized products for your specific lighting designs.

provide tailored  
of your project.

We test products in our own accredited labs. This is to make sure that after specifications our products still comply with highest quality standards.



Electromagnetic compatibility (EMC) testing



IP dust chamber testing



## YOUR PROJECT IS OUR BUSINESS SERVICE FROM LEDVANCE

Your competent contact person at LEDVANCE accompanies you through the whole project. Being your single source for all lighting products and components makes working with us even more comfortable.

### ANY QUESTIONS? TALK TO US

Are you interested in our services for your projects? Our project business experts are happy to advise you. You can reach us at [contact@ledvance.com](mailto:contact@ledvance.com) or by phone on +49 89 780673-600

ALL INFORMATION ON SUCCESSFUL PROJECTS CAN BE FOUND HERE:

[www.ledvance.com/projects](http://www.ledvance.com/projects)

OVERVIEW OF

# OUR SPECIFICATION SERVICES

## ASSEMBLY TO ORDER



**CHANGE ON/OFF DRIVER  
BY A DIMMING DRIVER  
(ZIGBEE, DALI, KNX, 1-10V)**



**MODIFY CABLE  
CONNECTOR  
MECHANICAL**



**CONNECT TO PARTNER  
LIGHT MANAGEMENT  
SYSTEMS**



**PROGRAM A  
DRIVER (DALI,  
ASTRO DIM)**



**FLOODLIGHT ARENA** specified by LPS in Molsheim  
shortly before being installed at the BayArena.

Nestled in the heart of France's Grand Est region, our Molsheim Innovation Centre represents the pinnacle of lighting technology. This state-of-the-art facility isn't just a workplace – it's a laboratory of possibilities. Within the Molsheim facility, LEDVANCE PROJECT SERVICES takes centre stage when it comes to fulfilling specific customer needs.

**BLING AND  
RS, CHANGE  
AL INTERFACES**



**INTEGRATE A  
LIGHT / PRESENCE  
SENSOR**

**A DIMMING  
LI, VIVARES,**



**CUT ON DEMAND  
OF LED STRIPES  
OR RAILS**

#### **CASE EXAMPLE - BAYARENA**

THE STADIUM OF GERMAN FOOTBALL CHAMPION BAYER 04 LEVERKUSEN

## **THE PERFECT SOLUTION FOR EVERY HIGHLIGHT**

A showcase of lighting excellence: the BayArena stadium lighting project. The venue was upgraded to UEFA Elite Level A standards using customised FL ARENA floodlights. The result: enhanced broadcast quality, an elevated spectator experience, and a significant reduction in environmental impact.

**FIND OUT MORE** [LEDVANCE.COM/PROJECTS](https://www.ledvance.com/projects)

# UTILISE 2D PRINTING FOR A NEW WORLD OF LIGHT



## DESIGN YOUR LIGHT

Enhance your lighting projects with high-definition 2D printing from LEDVANCE Project Services. Create custom, long-lasting solutions by personalising LED panels with unique branding, decorative components, or functional signage.

Our Design Your Light service is perfect for office lounges, retail spaces, and commercial areas. Transform standard luminaires into striking features that align with your vision.

**REACH OUT  
TO YOUR LOCAL  
LEDVANCE SALES  
REPRESENTATIVE  
TO PERSONALISE YOUR  
LUMINAIRES WITH  
PRINTED IMAGES.**

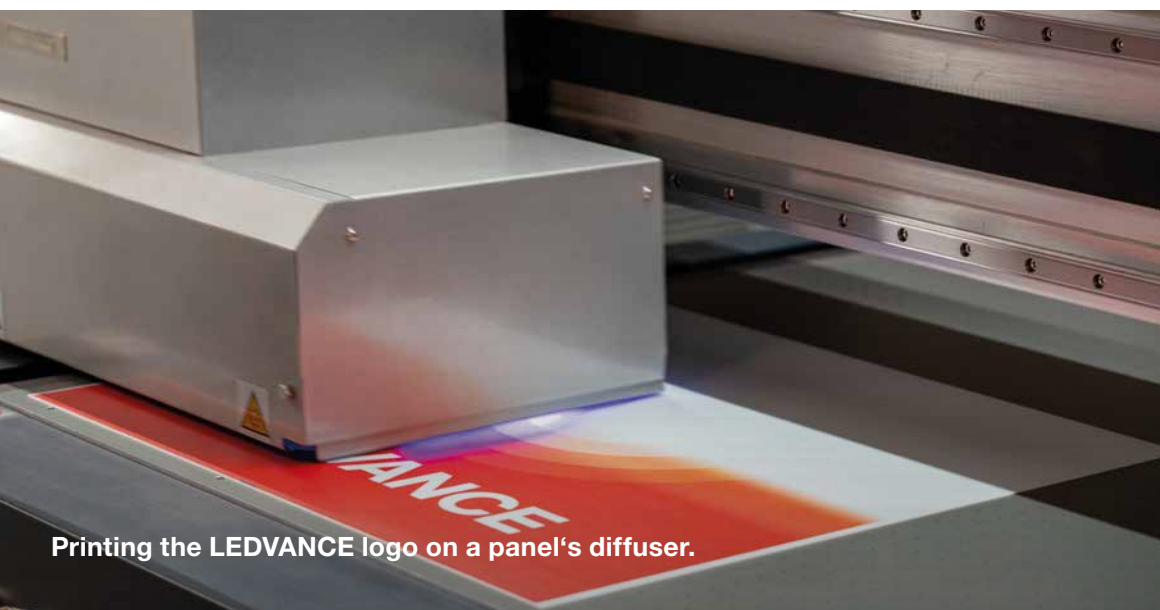




Individual images printed on luminaires.



Brings the sky into buildings: PANEL PRINT SKY, can be ordered as a standard product.



Printing the LEDVANCE logo on a panel's diffuser.



# A STRONG EUROPEAN PARTNERSHIP NETWORK

We have broad sourcing choices thanks to our large European network, with verified suppliers and partners for almost every project!

## LPS MOLSCHEIM

PRODUCT CUSTOMISATION FOR MANIFOLD APPLICATIONS

OFFICE & EDUCATION

INDUSTRIES & LOGISTICS

SPORT

SHOP

URBAN & STREET



**LEDVANCE**

LOBLICHT IS PART OF THE LEDVANCE GROUP

We grow with our partners. Lately, LEDVANCE acquired Loblicht, one of the major partners in office lighting.



Get in touch with your local LEDVANCE sales representative to find out how we can help you take your concepts to the next level.

[ledvance.com/project-services](https://ledvance.com/project-services)



Step inside LEDVANCE's Innovation Hub in Molsheim

**You imagine it. We create it.**



POWER THROUGH LIGHT



**LEDVANCE**

PROJECT  
SERVICES



## ABOUT LEDVANCE

With business activities in over 140 countries, LEDVANCE is one of the world's leading general lighting companies. Emerging from OSRAM's general lighting division, LEDVANCE's portfolio includes LED lamps and luminaires, intelligent lighting products, traditional lamps and renewable energy solutions.

#POWERTHROUGHLIGHT

[www.ledvance.com](http://www.ledvance.com)

LEDVANCE GmbH  
PARKRING 1-5  
85748 Garching  
Germany  
LEDVANCE.COM